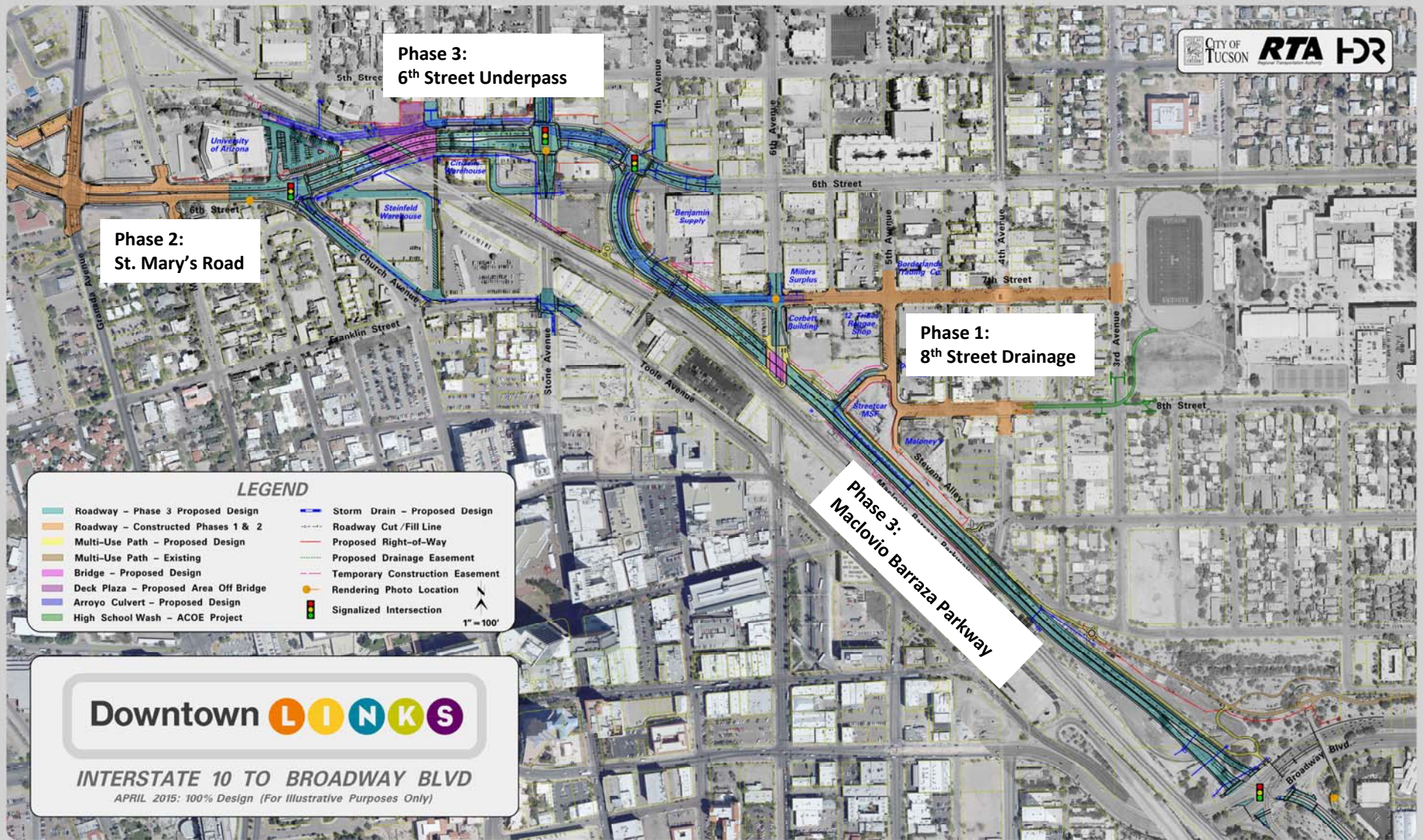


# Downtown Links Corridor Project

January 2017 Update



**Phase 3:  
6th Street Underpass**

**Phase 2:  
St. Mary's Road**

**Phase 1:  
8th Street Drainage**

**Phase 3:  
Maclavio Barraza Parkway**

**LEGEND**

|                                       |                                 |
|---------------------------------------|---------------------------------|
| Roadway - Phase 3 Proposed Design     | Storm Drain - Proposed Design   |
| Roadway - Constructed Phases 1 & 2    | Roadway Cut / Fill Line         |
| Multi-Use Path - Proposed Design      | Proposed Right-of-Way           |
| Multi-Use Path - Existing             | Proposed Drainage Easement      |
| Bridge - Proposed Design              | Temporary Construction Easement |
| Deck Plaza - Proposed Area Off Bridge | Rendering Photo Location        |
| Arroyo Culvert - Proposed Design      | Signalized Intersection         |
| High School Wash - ACOE Project       |                                 |

1" = 100'

**Downtown LINKS**

**INTERSTATE 10 TO BROADWAY BLVD**

APRIL 2015: 100% Design (For Illustrative Purposes Only)



# Project Scope

## Scope for Design: (HDR Inc., and consultant team)

The project is in the 20-year RTA plan approved by voters in 2006 (includes \$76.1M).

A 1.3 mile long multi-modal roadway corridor linking I-10 and Broadway, along railroad.

- 4 vehicle lanes with medians and turn lanes
- On-street bike lanes, sidewalks, and separate multi-use path
- Major drainage improvements: New Tucson Arroyo culvert
- 6th Street Underpass at the Union Pacific Railroad
- Four rail-crossing upgrades to establish Quiet Zone eligibility
- Maclovio Barraza Parkway bridge over 6<sup>th</sup> Avenue
- 9<sup>th</sup> Avenue Deck Plaza with public space, landscaping, art
- Native desert landscaping and passive water harvesting
- Public art – 6 total artists for corridor
- 6<sup>th</sup> Avenue signal upgrade for two-way traffic



CITY OF  
TUCSON

Department of  
Transportation



# Ongoing Issues



Traffic circulation/  
bike & pedestrian  
safety

45-50 trains each day  
delays & fatalities



Industrial zone/  
contaminants

Flooding and  
emergencies



Department of  
Transportation



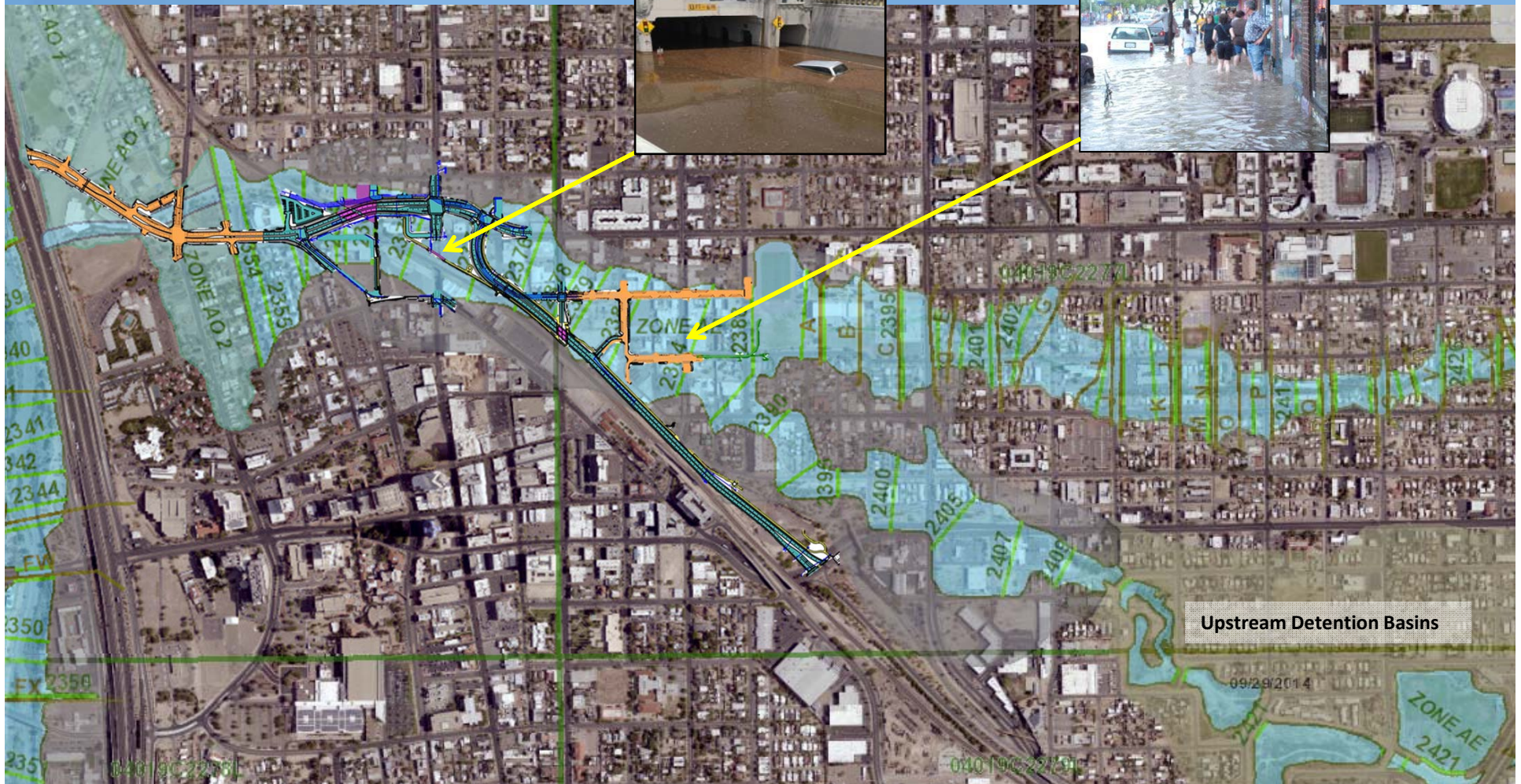


# FEMA Floodplain

Stone Avenue - 2016



Fourth Avenue - 2007



Upstream Detention Basins

09/29/2014



# Project Schedule

## Phase I: 8<sup>th</sup> Street Drainage Improvements

- Completed in **May 2012**

## Phase II: St. Mary's Road, from I-10 to Church Ave.

- Completed in **May 2014**

## Phase III: Church Ave. to Broadway

- **2015:** Completed 100% Plans
- **2016:** Completed property acquisitions and most demolitions. Received signed Master Agreement from Union Pacific Railroad (UPRR). Some utility relocations.
- **2017 (early):** -Complete 3 demolitions, utility relocations, environmental clean-up.  
-Attend public hearing with Arizona Corporation Commission
- **2017 (mid/l):** -Finalize and issue RFP for Phase III construction project  
-Begin major construction that will last 24-30 months



CITY OF  
TUCSON

Department of  
Transportation



# Future 6<sup>th</sup> Street Underpass

Looking east from Church Ave. intersection



Rendering for illustrative purposes only



CITY OF  
TUCSON

Department of  
Transportation



# Future 9<sup>th</sup> Avenue Deck Plaza

Looking west



Rendering for illustrative purposes only



CITY OF  
**TUCSON**

Department of  
Transportation





# Future Stone Ave. Bike/Ped Bridge

Looking south from future 6<sup>th</sup> Street intersection



Rendering for illustrative purposes only



CITY OF  
**TUCSON**

Department of  
Transportation





# Future Bridge over 6<sup>th</sup> Avenue

Looking south from 7<sup>th</sup> Street



CITY OF  
TUCSON

Department of  
Transportation



# Future Maclovio Barraza Parkway

## Looking northwest from Broadway

Note: re-designed to narrow the intersection



Rendering for illustrative purposes only



CITY OF  
TUCSON

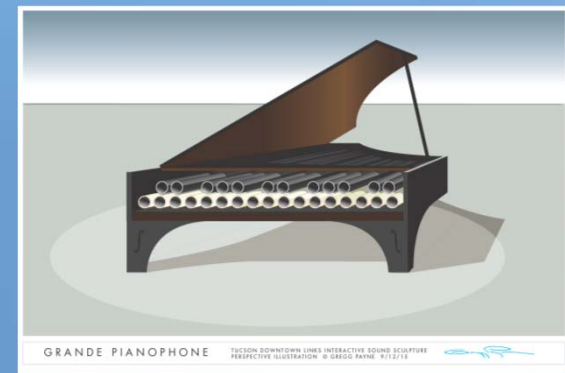
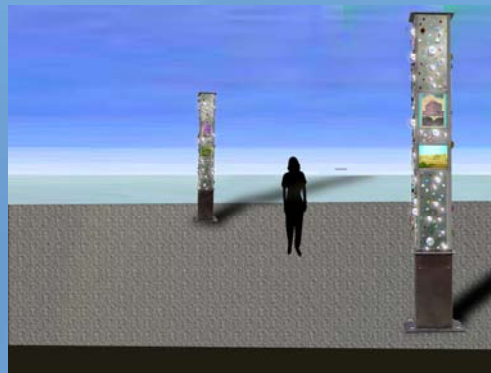
Department of  
Transportation





# Public Art

- Joe O'Connell, Wet Wheel, **finalizing plans**
- Cork Marcheschi, marble column, **in design**
- Greg Payne, grand pianophone, **in design**
- Simon Donovan and Ben Olmstead, wall design, **complete**
- Maclovio Barraza memorial, **artist selection in mid 2017**



CITY OF  
TUCSON

Department of  
Transportation



# More Information

**Downtown Links website:** [www.downtownlinks.info](http://www.downtownlinks.info)

Sam Credio, TDOT Administrator  
sam.credio@tucsonaz.gov

Tom Fisher, TDOT Project Manager  
tom.fisher@tucsonaz.gov



CITY OF  
TUCSON

Department of  
Transportation

